

# *KillTest*

质量更高 服务更好



## 学习资料

<http://www.killtest.cn>

半年免费更新服务

**Exam** : **640-875**

**Title** : Building Cisco Service  
Provider Next-Generation  
Networks, Part 1

**Version** : DEMO

1.What is the term that refers to a device that has no Customer Equipment directly connected to it in a Service Provider network?

- A. Provider Edge Router
- B. Customer Edge Router
- C. Non-customer Edge Router
- D. Provider Router
- E. Provider Edge Provider Router

**Answer: D**

## 2.DRAG DROP

Drag the protocols from the left and drop them on the correct descriptions on the right.

|        |                                      |
|--------|--------------------------------------|
| SSH    | identified by an EtherType of 0x0800 |
| IPv4   | identified by an EtherType of 0x0806 |
| ICMP   | identified by an EtherType of 0x86DD |
| Telnet | identified by IP protocol number 1   |
| UDP    | identified by IP protocol number 6   |
| ARP    | identified by IP protocol number 17  |
| TCP    | identified by TCP port 22            |
| IPv6   | identified by TCP port 23            |

**Answer:**

Drag the protocols from the left and drop them on the correct descriptions on the right.

|        |        |
|--------|--------|
| SSH    | IPv4   |
| IPv4   | ARP    |
| ICMP   | IPv6   |
| Telnet | ICMP   |
| UDP    | TCP    |
| ARP    | UDP    |
| TCP    | SSH    |
| IPv6   | Telnet |

### 3.DRAG DROP

Drag the protocols from the left and drop them on the Internet Protocol Suite layers where the protocol belongs on the right.  
Not all the layers on the right are used.

|      |                    |
|------|--------------------|
| ICMP | application layer  |
| TCP  | presentation layer |
| CDP  | session layer      |
| DNS  | transport layer    |
|      | internet layer     |
|      | link layer         |
|      | physical layer     |

Answer:

Drag the protocols from the left and drop them on the Internet Protocol Suite layers where the protocol belongs on the right. Not all the layers on the right are used.

|      |                    |
|------|--------------------|
| ICMP | DNS                |
| TCP  | presentation layer |
| CDP  | session layer      |
| DNS  | TCP                |
|      | ICMP               |
|      | CDP                |
|      | physical layer     |

#### 4.DRAG DROP

Drag the descriptions from the left to the correct layers of the hierarchical network model design on the right.

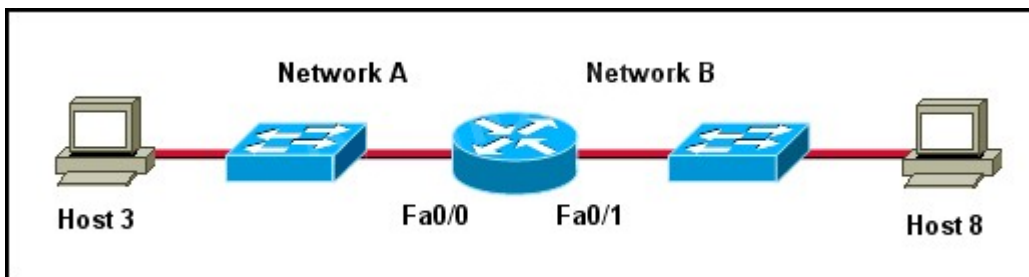
|   |                    |
|---|--------------------|
| where end-user devices connect into the network   | Access Layer       |
| provides high-speed connectivity with low latency and offers a limited set of services and is designed to be highly available | Target             |
| provides policy-based network connectivity  | Target             |
| most feature-rich layer and provides security services such as port security  | Distribution Layer |
|   | Target             |
|   | Core Layer         |
|   | Target             |

**Answer:**

Drag the descriptions from the left to the correct layers of the hierarchical network model design on the right.

|   |  |
|---|--|
| where end-user devices connect into the network   | <b>Access Layer</b><br>where end-user devices connect into the network<br>most feature-rich layer and provides security services such as port security |
| provides high-speed connectivity with low latency and offers a limited set of services and is designed to be highly available | <b>Distribution Layer</b><br>provides policy-based network connectivity  |
| provides policy-based network connectivity  | <b>Core Layer</b><br>provides high-speed connectivity with low latency and offers a limited set of services and is designed to be highly available     |
| most feature-rich layer and provides security services such as port security  |  |

5.Refer to the exhibit.



Host 3 on Network A is sending data to Host 8 on Network B.

Which address is the default gateway of Host 3?

- A. The address of the switch interface that is connected to router interface Fa0/0
- B. The address of the switch interface that is connected to router interface Fa0/1
- C. The address of the host that is connected to Network A
- D. The address of the host that is connected to Network B
- E. The address of the router interface Fa0/0
- F. The address of the router interface Fa0/1

**Answer: E**